



Fishers Lane, London, W4 1YA

£305,000

WHITMAN & CO.

SALES · LETTINGS · COMMERCIAL

- Bright and airy first floor apartment
- Bathroom with walk-in shower
- Host of communal facilities
- Kitchen with window
- Close to numerous amenities
- No onward chain

Tenure - Leasehold
 Lease Length - 59 years remaining
 Ground Rent - £511.20 pa
 Service Charge - £2,807 pa
 Local Authority - Hounslow
 Council Tax - Band D

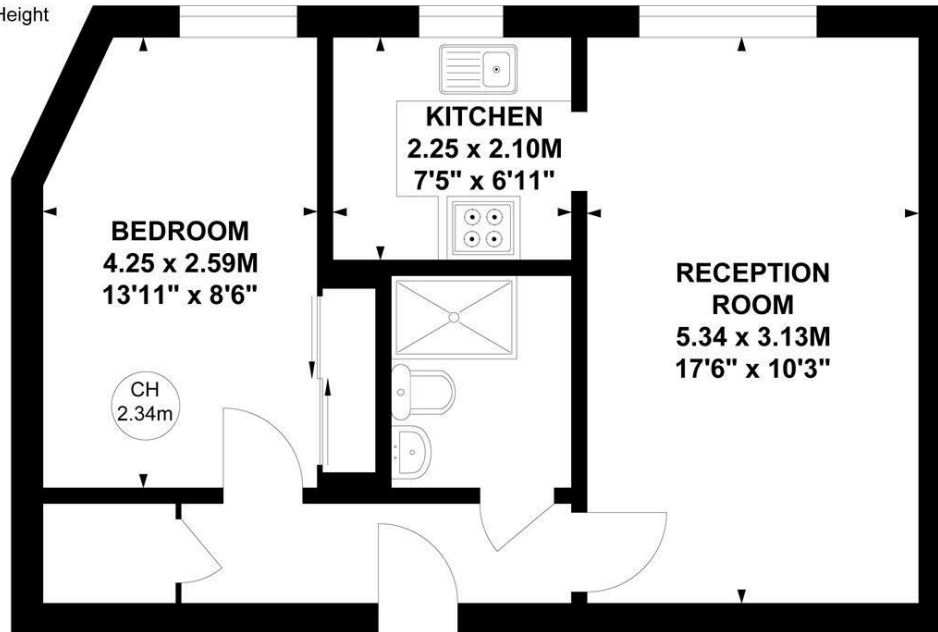
THE PROPERTY

A bright and airy south-facing first-floor apartment overlooking communal gardens located in this sought-after retirement complex in the centre of Chiswick close to shops and transport. The walls in the flat have been freshly painted and the carpets professionally cleaned. The bathroom has also benefited from new shower fittings. Additionally, ceramic radiators and a new boiler have recently been installed, and the electrics updated. The accommodation comprises a 17'6" reception room, a fitted kitchen with window, bathroom with walk-in shower, double bedroom with fitted wardrobe and storage cupboard. Communal facilities include a large residents lounge, private gardens, laundry room, lift access, residents off street parking, house manager and emergency response cover. Homecross House is located just north of Chiswick High Road offering close proximity to shops, cafes, restaurants, parks, two tube stations and numerous bus routes. No onward chain.

Homecross House, W4

Approximate gross internal area
43.69 sq m / 470 sq ft

Key :
 CH - Ceiling Height



First Floor

Not to scale, for guidance only and must not be relied upon as a statement of fact.
 All measurements and areas are approximate only

SITUATION



5-7 Turnham Green Terrace, Chiswick, London, W4 1RG

Tel 020 8747 8300

E-mail sales@whitmanandco.com

Website www.whitmanandco.com



MISREPRESENTATION ACT 1967

Whitman & Co. for themselves and for the vendors give notice that these particulars do not constitute any part of, an offer of contract. All statements contained in these particulars are made without responsibility on the part of Whitman & Co. or the vendor. None of the statements contained in these particulars is to be relied upon as statements or representations of facts. Any intending purchaser must satisfy himself by inspection or otherwise as to the correctness of each of the statements contained in these particulars. The vendor does not make or give, and neither Whitman & Co. or any person in their employment has any authority to make or give, any representation or warranty whatever in relation to the property.